



IoT Monitoring & Control Solution

See it. Control it.

Rubber Thickness Monitoring

Refrigerated Transport

Factory IoT Monitoring and Control

Electricity Plant Control

Building HVAC Control



TelPro is a unique solution that takes monitoring to a different level. It allows the user to program real-time actions based on what is discovered while monitoring.

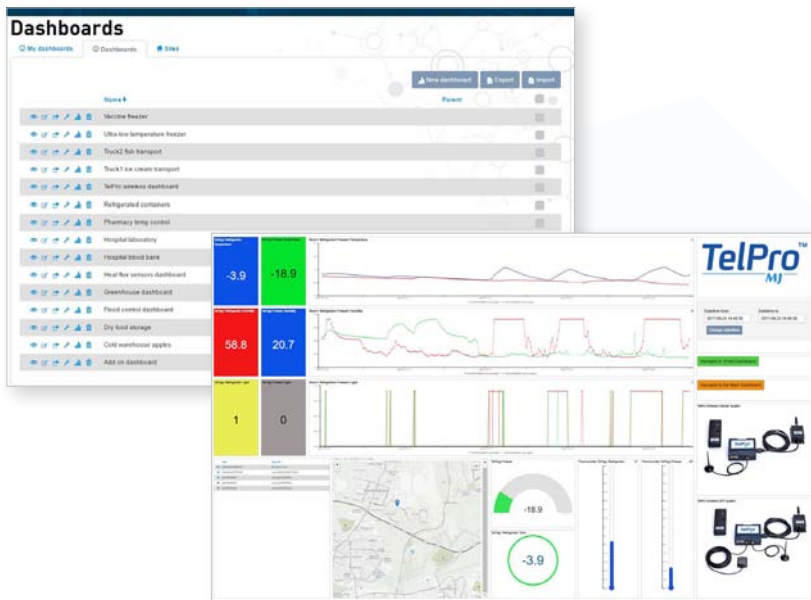
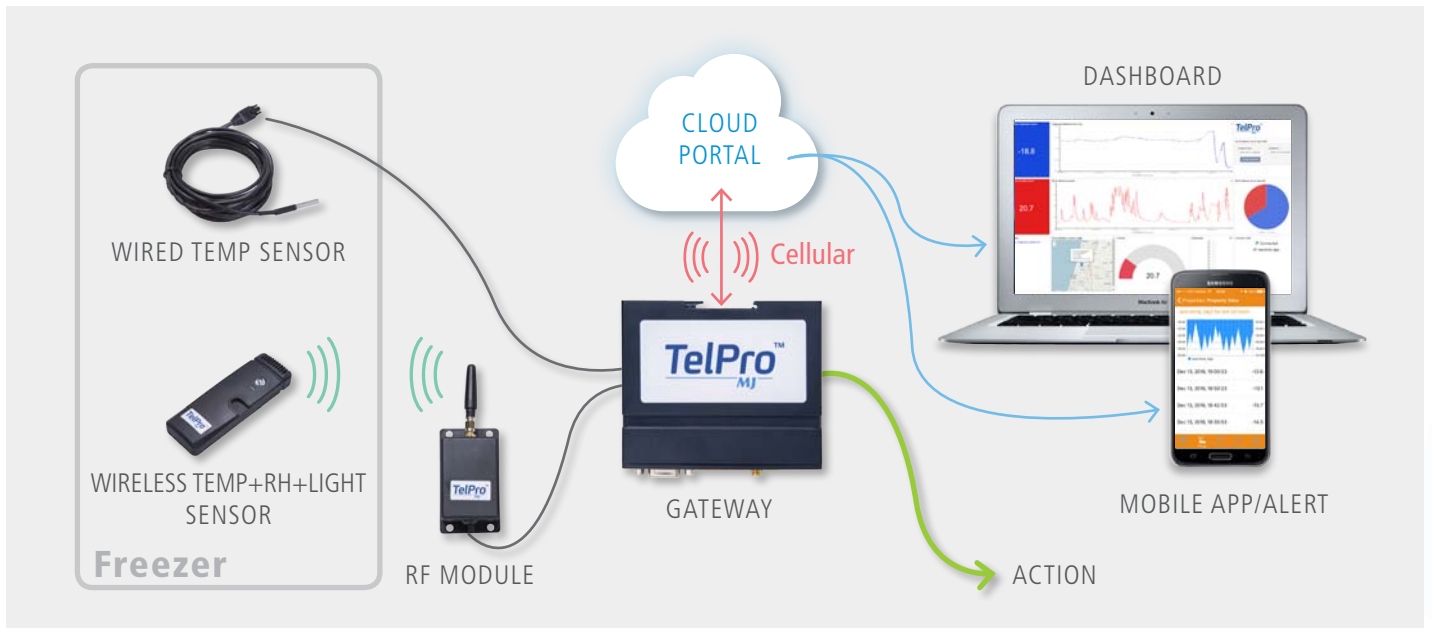
TelPro is more than just simple monitoring. TelPro is capable of performing an action to help solve developing issues and stop them before they become critical.

TelPro comes with user customizable dashboards that can be designed for use in any application and in any industry.

TelPro leverages both wireless sensors and cellular IoT data acquisition to create an excellent innovative active monitoring and control solution.

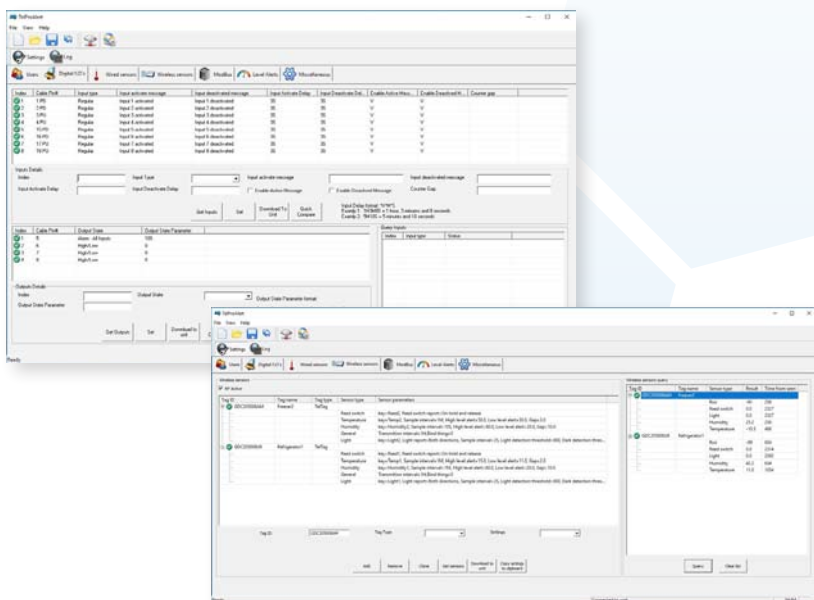
- Wireless cellular active monitoring and control solution for any kind of industrial and commercial applications
- Triggering actions on monitored events and thresholds
- User customizable dashboards for any kind of application in any industry
- Output channels for triggering sub systems (Up to 5 in parallel)
- Up to 16 wired and 10 wireless channels for Monitoring
- 8 digital and 4 analog inputs (including up to 4 pulse counters) for measuring, temperature, humidity, pressure, etc.
- Up to 4 - 1 wire temperature sensors
- Worldwide license-free 433MHz RF ISM band
- Geographical location
- Actionable alert email, text message, local activation outputs
- Fast and cable-free installation and setup





TelPro Cloud Portal

The TelPro Cloud portal provides complete management of Things, sensors, alarms, and triggers. The portal offers a user interface that includes user customizable dashboards based on pre-defined widgets, properties, and alarms. Dashboards make it easy to organize and display real time data and give a complete view of the TelPro and connected sensors. Dashboards can also display data from a single or multiple devices, and can be viewed in a single dashboard or in multiple dashboards. In addition to data such as temperature, humidity, and CO₂ levels, the dashboards can also display geographical location, and API usage.



TelProAlert Software

The TelProAlert software provides setup and configuration of parameters for the gateway and the cloud. Configuration and setup includes configuration of the cloud, digital I/Os, wired and wireless sensors, and Modbus configuration. Setup includes range of measurement, transmission interval, sampling rate, and thresholds for alarms. The TelPro gateway can also be configured through remote access via secured usernames and passwords. A USB or RS232 port is available for local connections.

See it. Control it.

Specifications

Wired inputs/outputs	2 x 4-20mA 12 bit analog inputs	
	2 x 0-15V 12 bit analog inputs	
	8 x 0-50V Digital dry contact inputs (up to 4 as pulse counters)	
	1 Wire (Up to 4 temperature sensors) inputs, Range: -55 to 125 °C (Accuracy: ±0.5 °C from -10 to 85 °C)	
	4 Open collector outputs 500mA	
	1 Relay output 30V 1A	
	Supports extended temperature range sensors (-40 to 125 °C, -200 to 200 °C, -200 to 1000 °C)	
Wireless	RF dongle	
	Up to 10 wireless sensors	
	433Mhz ISM band (868MHz available)	
	Indoor/Outdoor wireless range: 14dBm	
	Temperature	Range: -40 to 120 °C Resolution: 0.1 °C Accuracy: ±0.5 °C at 15 to 40 °C; ±1 °C at 0 to 60 °C
	Relative Humidity	Range: 0 to 100% Resolution: 0.1% Accuracy: ±3.5% at 20 to 80%; ±5% at 0 to 100%
	Light	Range: 0 to 50 Lux Resolution: 0.2 Lux Accuracy: ±2% Lux
	Magnet for activation	
	LED indicator	
	Location	Cellular location, Satellite navigation GPS (optional) Accelerometer (GPS)
Sampling	Capacity 1,000 samples	
Communication	3G and 2G modem - Frequency bands 3G (850, 900, 2100MHz) or (850, 1700, 1900MHz), 2G (850, 900, 1800, 1900MHz)	
	RS232, USB, RF, Modbus RTU, 1 wire	
AC/DC Power supply (Must be connected to the POWER input)	Operating voltage input range (7-55V / 8-40V GPS unit); Nominal voltage 12V DC	
	Current in idle mode: 40mA @ 12V	
	Battery life of gateway up to 5 hours	
	AC adaptor included; Optional 500mAh LIPO battery with integrated charger (GPS)	
Physical Parameters	Dimensions: 3.85" x 3.23" x 1.18" (98 x 82 x 30 mm)	
	Weight: 160 grams	
	Operating Temperature Range: -30 to 85 °C	
	2 Led indicators (Aux, Cell)	
Cloud and Security	Cloud	
	Network Level Security: From unit to Cloud SSL + Certificate	
	Application security: Session Id, Password Login, TR50 (TIA)	
	Dashboard - Highly flexible, Easy user-customizable	
	Geographical location on map	
Standards compliance	CE, FCC; ISM bands	

Pharmaceutical
Detects and responds to environmental changes in sensitive areas such as labs, coolers, freezers, greenhouses, and warehouses



Warehouses
Pharmaceuticals, vaccines, food and other perishables



Cold storage and transportation
Monitoring and control of temperature and humidity



Hospitals
Alerts about sterilization, blood, tissue storage, products and transportation



Cold chain
Ensuring that products maintain their quality to the customer premises



Safety
Detection and control over flood levels in designated areas

Ordering Information

Part Number (PN)	Product Description
TelPro System Bundles	
 TelPro Wired System 01 PRO-001-EU* PRO-001-NA*	TelPro Cellular gateway + Cellular antenna + Power supply + TelTemp 1 Wire sensor
 TelPro Wireless System 02 PRO-002-EU* PRO-002-NA*	TelPro Cellular gateway + Cellular antenna + Power supply + RF module + TelTag Wireless sensor
 TelPro Wired GPS System 03 PRO-003-EU* PRO-003-NA*	TelPro GPS gateway + Cellular antenna + GPS antenna + Power supply + TelTemp 1 Wire sensor
 TelPro Wireless GPS System 04 PRO-004-EU* PRO-004-NA*	TelPro GPS gateway + Cellular antenna + GPS antenna + Power supply + RF module + TelTag Wireless sensor
Gateway and Devices	
 TPD-800-EU* TPD-800-NA*	TelPro Cellular gateway + Cellular antenna + Power supply
 TPG-900-EU* TPG-900-NA*	TelPro GPS gateway + Cellular antenna + GPS antenna + Power supply
 RFM-433	RF module 433Mhz (2 m cable)
Sensors	
 TLN-800-433	TelTag Wireless temperature, humidity & light sensor
 TLS-810-433	TelTag Wireless temperature, humidity & light sensor with mounting
 1WR-01T	TelTemp 1 Wire temperature sensor (3 m cable)
 1WR-04T	TelTemp 1 Wire 4 temperature sensors (3 m cable)

Part Number (PN)	Product Description
Accessories	
 PWR-005-EU PWR-005-US PWR-005-UK	Power supply Europe Power supply USA Power supply UK
 ANT-120	Cellular antenna wire and magnet (0.5 m cable)
 ANT-160	Stick antenna
 ANT-180	GPS antenna GNSS (5 m cable)
 CAB-USB	USB cable B (1 m cable)
 CAB-232	RS232 cable (0.75 m cable)
 24P-24W	24 Pin 24 Wire cable connector
 LIP-OBT	LiPo optional backup battery (GPS)
 TTB-36V	TelTag Wireless sensor battery 3.6V
Cloud (IoT)	
 CLD-BND	Cloud bundle gateway and storage
 CLD-API	Additional Cloud API per gateway
 CLD-STO	Additional Cloud data storage per application

*EU/NA - Europe/North America

About MJ

MJ Ltd. is an innovative technologies company. Our IoT Data Acquisition solutions are designed to monitor, control and take actions on events where early alerts to environmental parameters are critical to operations. We serve clients in many different sectors including medical, pharmaceutical, food, storage, transportation and manufacturing fields.

Our vision is to bring our customers new and innovative solutions for common business needs. We are committed to the highest level of customer satisfaction through our quality products and solutions.



MJ Ltd.

Worldwide: +33 9 75 18 62 89

Mobile: +972 54 55 05 035

Email: m@juwiler.com